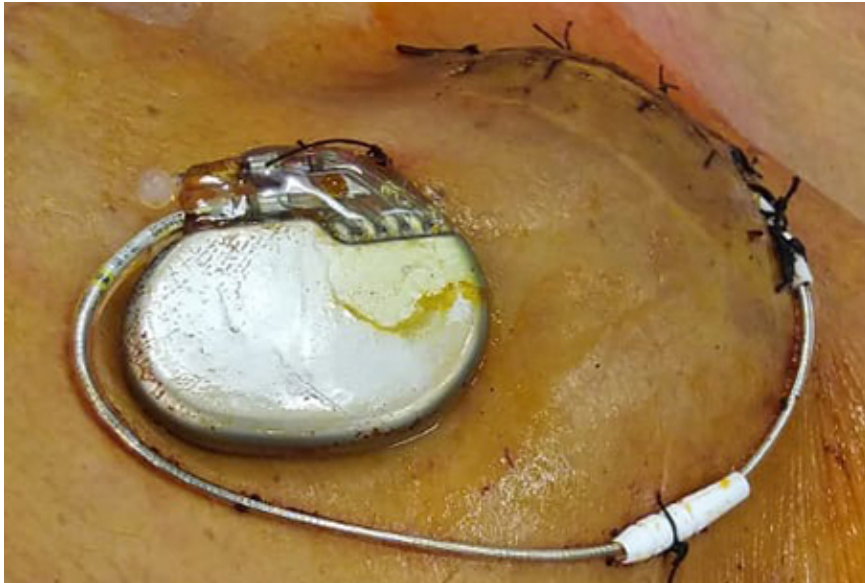


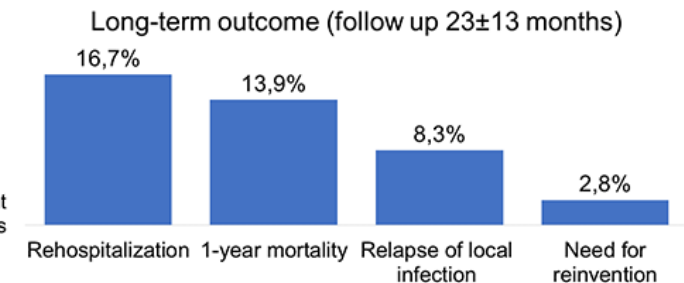
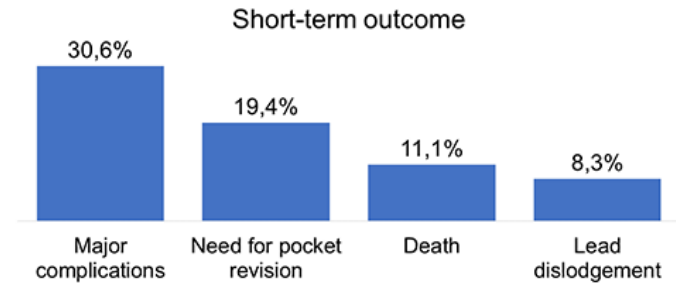
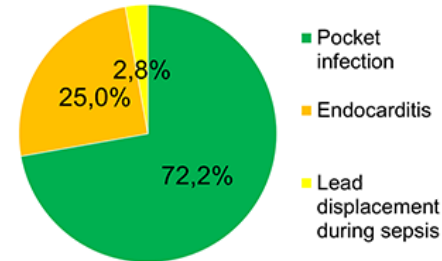
Working on the dirty side – The ipsilateral subclavian access for temporary pacing after lead extraction

Zweiker D, Melillo F, D'Angelo G, Radinovic A, Marzi A, Cianfanelli L, Altizio S, Limite LR, Paglino G, Frontera A, Nakajima K, Della Bella P, Mazzone P (San Raffaele Hospital, Milan, Italy)

Temporary pacing is necessary in pacemaker-dependent patients after transvenous lead extraction (TLE) for cardiac implantable electronic device infection. We propose to use the ipsilateral subclavian access (ISA) combined with a standard permanent active fixation lead for the temporary pacemaker.



36 patients (13.9% female)
Age: 77 ± 11 years
Lead age: 108 ± 90 months
 2.6 ± 0.8 leads per patient
Indications:



Conclusion: Temporary pacing using a standard permanent active fixation lead using the ISA was safe, with a low incidence of reinfections.

Contact: david.zweiker@medunigraz.at

